

Caxtool Kft.
6791 Szeged, Dorozsmai út 157. EU
+36 62 254 826
+36 30 565 1812
d.zanocz@caxtool.hu
info@caxtool.hu

Adószám: 12871856-2-06
Adószám: HU 12871856
Bankszámla száma: 57600101-11102986
SWIFT (BIC): TAKBHUHB
IBAN: HU65 57600101 11102986 00000000
cégjegyzékszám: 06-09-014002
info:

Képgyűjtemény

Fiber lézervágó berendezés

CAXTC_Accurl_Smart_3015_6kW_1.0 fiber lézervágó berendezés / Fiber cutting machine

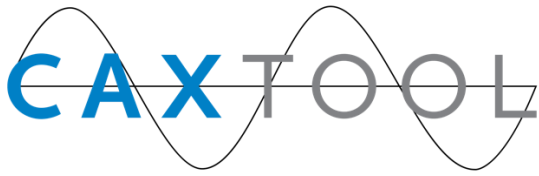


FULLY ANNEALED FRAME

Accurl steel frames under go annealing at over 600° to relieve stress. They are built to last years of heavy use without distortion.

Auto changing pallet system allows over 2500kg loading weight.





Caxtool Kft.
6791 Szeged, Dorozsmai út 157. EU
+36 62 254 826
+36 30 565 1812
d.zanocz@caxtool.hu
info@caxtool.hu

Adószám: 12871856-2-06
Adószám: HU 12871856
Bankszámla száma: 57600101-11102986
SWIFT (BIC): TAKBHUHB
IBAN: HU65 57600101 11102986 00000000
cégjegyzékszám: 06-09-014002
info:

OPTIMIZED BASE FRAME

- Very stiff and stable base frame
- Eight(8) zone & ducted exhaust system
- Dual synchronized twin servo motor drive system
- Helical rack & slant pinion drive system enables very smooth movements.



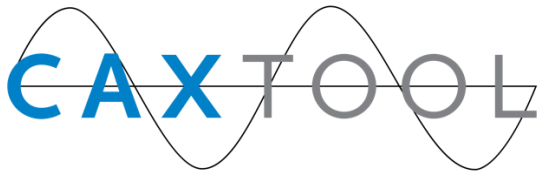
UITRALIGHT-WEIGHT GANTRY STRUCTURE

- Light-weight cutting head assembly (Total weight 130 lbs) is designed for high dynamic movement, lowering the Tool Center Point to keep the cutting head from losing accuracy that is caused by whipping or drifting during high speed accel/decell movement

CAST ALUMINIUM GANTRY

- ACCURL®'s high tech aluminium cross beam is cast in a specially manufactured 10-tonne steel mould.
- This allows better rigidity at 50% of the weight of traditional iron gantries, allowing higher acceleration with reduced inertia.





Caxtool Kft.
6791 Szeged, Dorozsmai út 157. EU
+36 62 254 826
+36 30 565 1812
d.zanocz@caxtool.hu
info@caxtool.hu

Adószám: 12871856-2-06
Adószám: HU 12871856
Bankszámla száma: 57600101-11102986
SWIFT (BIC): TAKBHUHB
IBAN: HU65 57600101 11102986 00000000
cégjegyzékszám: 06-09-014002
info:

YASKAWA SERVO MOTORS & DRIVES

- The Smart line is equipped with cutting edge Germany designed
- servo motors and drives from YASKAWA.
- High-speed EtherCAT communication
- Highly dynamic behaviour
- Brushless three-phase motors
- Flexible motor type selection

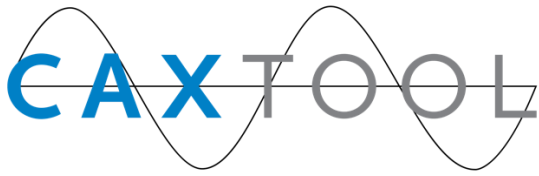


HYP CUT FSCUT8000C TwinCAT CNC CONTROL (option)

- The ACCURL Smartline Fiber Laser is controlled with a HypCut FSCUT 8000 CNC control unit which provides unprecedented control of the cutting process.
- EtherCAT and eXtreme Fast Control (XFC) technology enable fast switching functions at high processing speeds.
- HypCut CNC controllers are used in laser cutting machine. and the TwinCAT NC I/CNC automation software is ideally suited for application-specific functions, including adaptive jet control, reverse travel or path resetting.

HYP CUT CNC System Features:

- 17" high resolution colour TFT (touch screen control)
- High-speed EtherCAT communication
- TwinCAT: software for engineering and runtime
- Highly dynamic servo drive technology



Caxtool Kft.
6791 Szeged, Dorozsmai út 157. EU
+36 62 254 826
+36 30 565 1812
d.zanocz@caxtool.hu
info@caxtool.hu

Adószám: 12871856-2-06
Adószám: HU 12871856
Bankszámla száma: 57600101-11102986
SWIFT (BIC): TAKBHUHB
IBAN: HU65 57600101 11102986 00000000
cégjegyzékszám: 06-09-014002
info:

- Integrated retention brake control.
- Automatic adaptation of parameters.
- Adjustable error reaction.
- Motor feedback for absolute position registration.
- EtherCAT I/Os: broad I/O spectrum in IP 20 and IP 67 protection rating
- Industrie 4.0 for sheet metal working with TwinCAT Analytics and TwinCAT IoT

Successfully controlling precision & productivity

Nowadays, modern sheet metal production is inconceivable without high performance software. Highly effective control algorithms optimize the machine cycle, reduce the time required for set-up and ensures consistently high quality.



ACCURL puts industry 4.0 within the reach of companies™

ACCURL® advocated its own new IoT technology as “Intelligent Internet of things factory”, termed the “Smart-Factory”.

Thanks to the advanced ACCURL® CNC and RayBox V1.8 System software tools like the “Smart Factory” make it possible for companies to enter industry 4.0 that is revolutionizing the reality of companies. you can extract data and share information at company level: bending programs, sensors, production statistics.



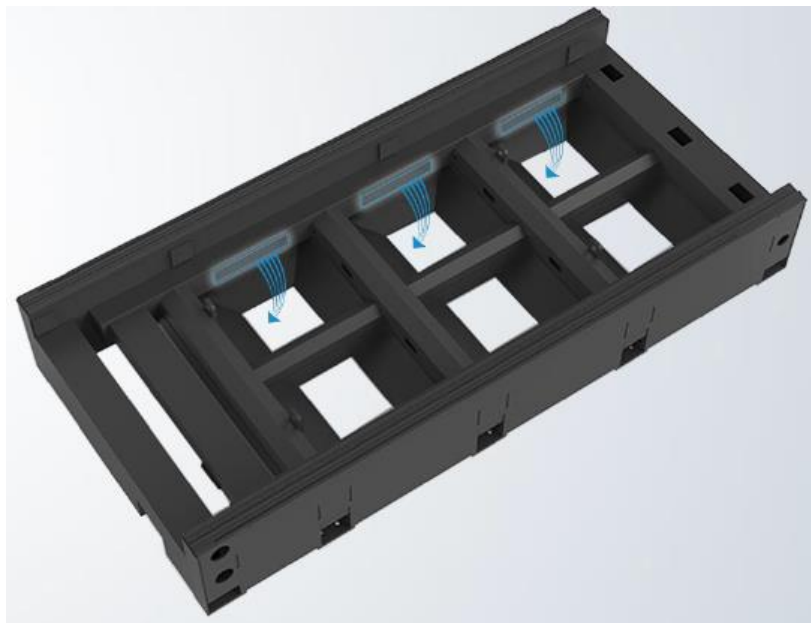
GRAPHITE ANTI-BURN TECHNOLOGY

- The area in the entire machine tool where the laser can shoot at is all covered and protected by 20mm thick graphite anti-bruning.
- To insuring the machine bed and working table not be out of shape and burned-out.



FUME EXTRACTION SYSTEM

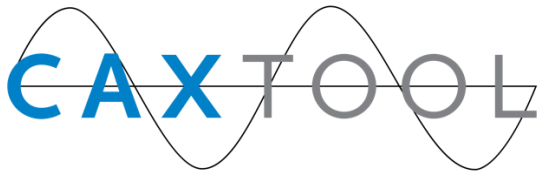
- Efficient fume extraction by means of shutters which are controlled in accordance with cutting head position results in more efficient use of the filtration system.
- Therefore a smaller lower cost system can be used.the system consists of six fume extraction zones (as seen below).
- Smaller air flow from the dust collector
- Low electrical consumption
- Smoke and dust free machining area



DUST EXTRACTION SYSTEM

- The fumes extraction or aspiration system for the treatment of vapors and fumes derived from laser cutting, consisting of:
- Filter plates with automatic compressed air cleaning cycle
- Integrated silencer
- Elimination of dust, particles and harmful fumes generated during cutting:
- Intelligent control by Siemens
- Self cleaning and Easy Disposal
- Free contacts for external control
- Integrated fan
- Dust load dependent automatic filter cleaning
- Siemens CPU and PTFE membrane filter cartridges
- This system is used to filter dry dust from industrial leaks, in accordance with VDI guidelines 3677, paragraph 4. The filter elements use compact porous filters.
- In many countries it is forbidden to circulate filtered air during the cutting of stainless steel (CrNi). Therefore, it is recommended that the user install air ducts to the outside.





Caxtool Kft.
6791 Szeged, Dorozsmai út 157. EU
+36 62 254 826
+36 30 565 1812
d.zanocz@caxtool.hu
info@caxtool.hu

Adószám: 12871856-2-06
Adószám: HU 12871856
Bankszámla száma: 57600101-11102986
SWIFT (BIC): TAKBHUHB
IBAN: HU65 57600101 11102986 00000000
cégjegyzékszám: 06-09-014002
info:

Precitec ProCutter 2.0 laser head - the latest generation in laser cutting

motorized focus position adjustment for automatic machine setup and piercing work

lightweight and slim design created for fast acceleration and cutting speed

drift-free, fast-reacting distance measurement

permanent protective window monitoring

automated piercing with PierceTec

water cooling of the sheet metal with CoolTec

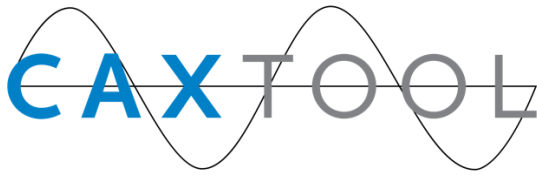
completely dustproof beam path with protective windows

LED operating status display

output of all sensor data via WLAN to APP and machine control possible

pressure monitoring in the nozzle area (gas cutting) and in the head





Caxtool Kft.
6791 Szeged, Dorozsmai út 157. EU
+36 62 254 826
+36 30 565 1812
d.zanocz@caxtool.hu
info@caxtool.hu

Adószám: 12871856-2-06
Adószám: HU 12871856
Bankszámla száma: 57600101-11102986
SWIFT (BIC): TAKBHUHB
IBAN: HU65 57600101 11102986 00000000
cégjegyzékszám: 06-09-014002
info:

FIBER LASER RESONATOR IPG

•The fiber laser resonator is a separate unit unattached to the cutting machine; this facilitates the design of laser cutters to deal with high speed cutting of thin materials and highquality cutting of thick materials. The unit contains the high stability resonator, kinetically suspended. The laser resonator includes a communication system featuring the control unit and a closed cooling circuit.

Features of the IPG equipment are as follows:.

- Direct control of all the fiber laser functions
- Synchronized control of the lasersource
- Overall power control
- High speed perforation
- Edge machining function
- Cutting data library
- High speed fiber laser cutting
- Wall-plug Efficiency >40%
- Cost-effective CuttingSystem
- Maintenance-free Operation
- Fiber Delivery 50, 100, 150or 200µm
- CW Output Power up to 20 kW @ Workpiece
- New fiber block design with 3x increase in damage power threshold, resulting in increasedreliability

COMMITMENTTO QUALITY

•Accurl assemble their machines tothe strictest qualitystandards, utilizing many tools and methods to ensure accuracy all throughout their process.

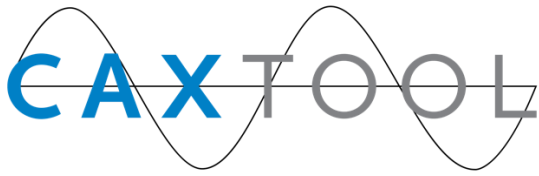
•The use of an interferometer records the machines X and Y axis movement during cutting to ensure accuracy. Adjustments are made to ensure machine is precisely tuned before shipment.



- A Marble test is performed to measure the X and Y axis, calculating any necessary adjustments to ensure perfect level and alignment along length of machine.

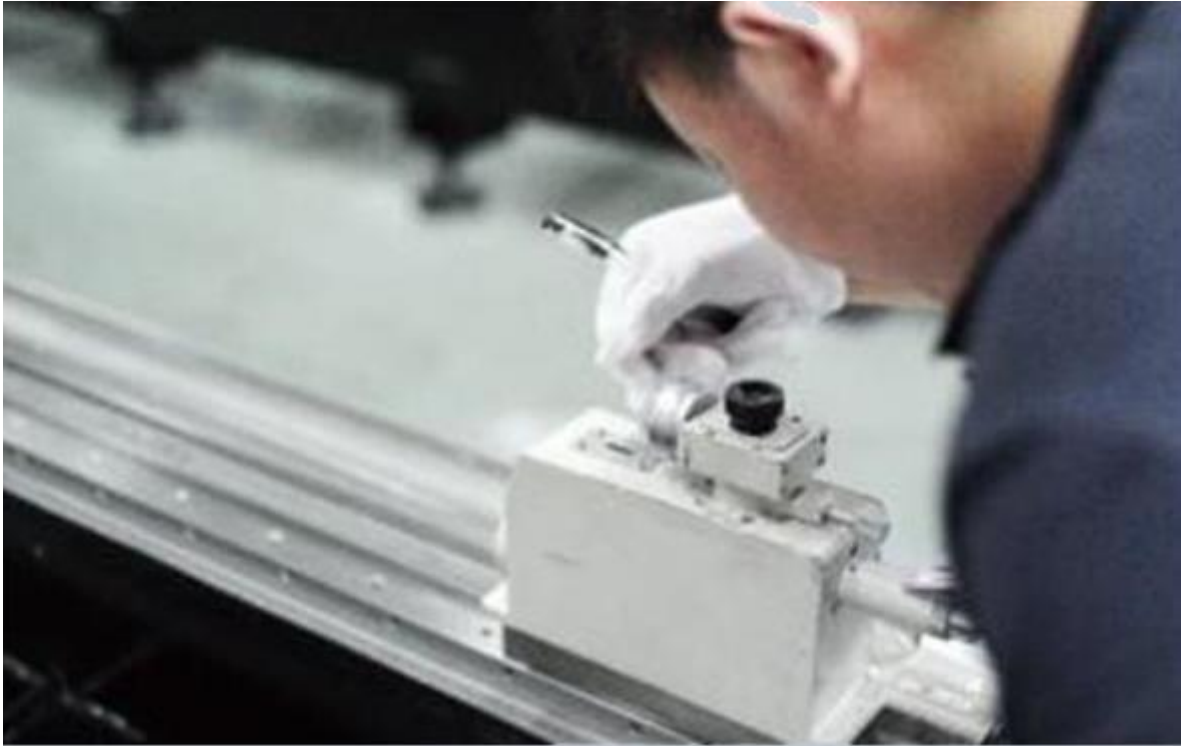


- A collimator is run along the full length of the guide rail, testing for straightness. Adjustments are made as required to ensure linear accurate linear accuracy.



Caxtool Kft.
6791 Szeged, Dorozsmai út 157. EU
+36 62 254 826
+36 30 565 1812
d.zanocz@caxtool.hu
info@caxtool.hu

Adószám: 12871856-2-06
Adószám: HU 12871856
Bankszámla száma: 57600101-11102986
SWIFT (BIC): TAKBHUHB
IBAN: HU65 57600101 11102986 00000000
cégjegyzékszám: 06-09-014002
info:



Machine Application

Widely used in sheetmetal processing, aviation, aerospace, electronics, electrical appliances, automobile, food machinery, textile machinery, engineering machinery, precision parts, ships, metallurgy equipment, elevators, household appliances, craft gifts, tool processing, decoration, advertising, and other fields. Professional used to cut sheet metal like carbon/mildsteel, stainless steel, aluminum alloy, galvanized sheet, electrolytic plate, titanium alloy, aluminum zinc plate, etc.

